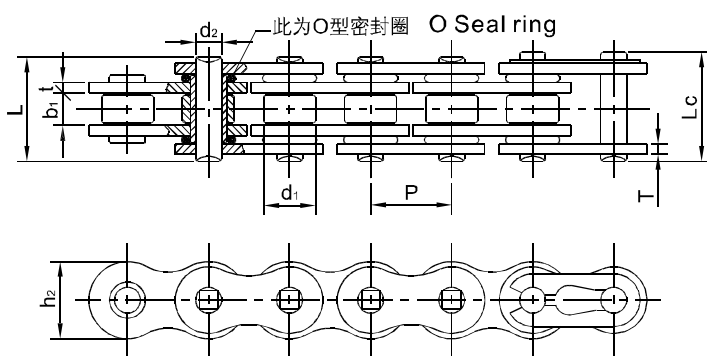


GB/ISO 链号 GB/ISO Chain No.	JCAS 链号 JCAS Chain No.	节距 Pitch	滚子直径 Roller diameter	销轴直径 Pin diameter	内节内宽 Width between inner plates	销轴长度 Pin length		内链板高度 Inner plate depth	链板厚度 Plate thickness	抗拉强度 Ultimate tensile strength	平均抗拉强度 Average tensile strength	每米重量 Weight per meter
						L	Lc					
						max	max					
*04MA	25H	6.35	3.30	2.31	3.10	9.10	10.60	6.00	1.00	4.80	5.50	0.17
*05MA	219	7.774	4.59	3.01	4.68	12.00	13.60	7.50	1.20/1.00	6.60	7.40	0.27
*05MC	270	8.50	5.00	3.28	4.75	13.30	-	8.60	1.80/1.40	9.80	10.80	0.33
06MA(T、F)		9.525	6.00	4.50	9.50	18.60	-	9.30	1.85/1.48	11.80	14.10	0.61
08MA	420	12.70	7.77	3.96	6.25	16.00	17.60	12.00	1.50	16.00	18.50	0.55
08MB	428	12.70	8.51	4.45	7.75	17.00	19.50	11.80	1.50	17.80	21.00	0.66
08MC	428H	12.70	8.51	4.45	7.75	19.30	21.80	11.80	2.00	20.60	23.50	0.79
10MA	520	15.875	10.16	5.08	6.25	19.00	21.50	15.09	2.40	26.50	31.80	1.00
10MB	530	15.875	10.16	5.08	9.40	22.00	24.50	15.09	2.00	26.50	30.00	1.06

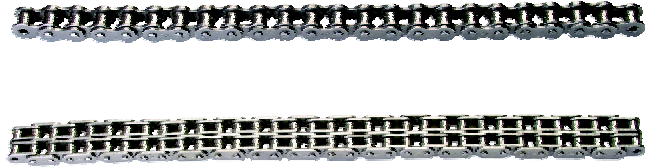
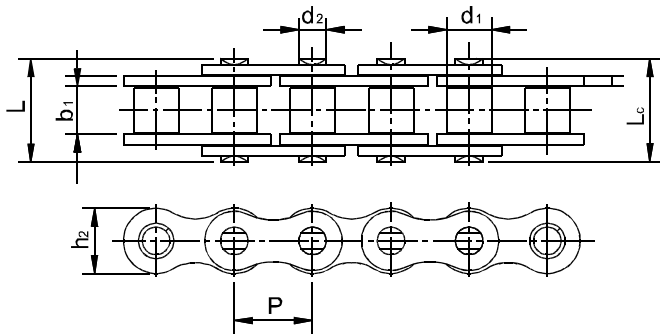
注:对套筒链而言,表中滚子d1直径应为套筒外径  
Note:For Bush Chain:d1 indicate the external diameter of the bush



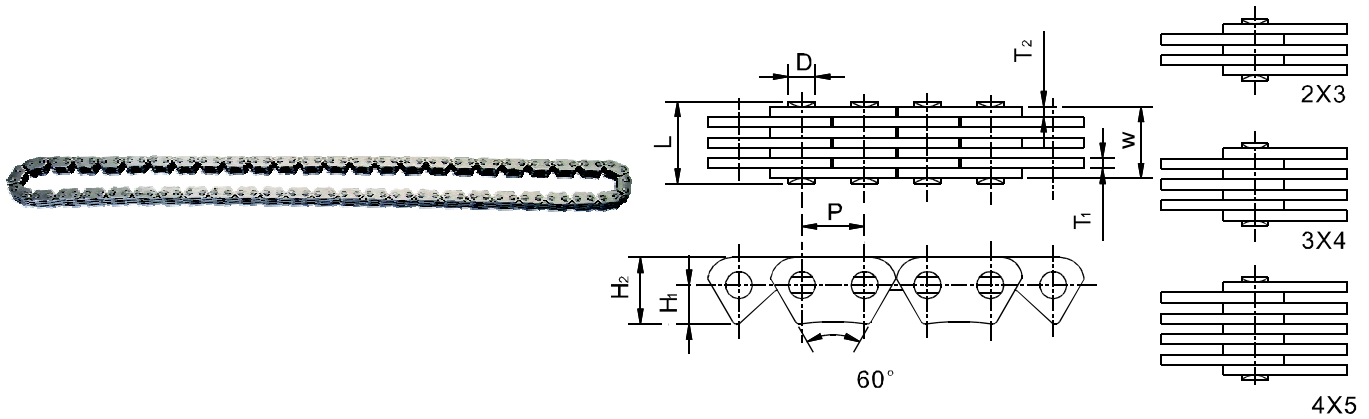
O型密封圈摩托车链  
O seal ring motorcycle chains



GB/ISO 链号 GB/ISO Chain No.	节距 Pitch	滚子直径 Roller diameter	内节内宽 Width between inner plates	销轴直径 Pin diameter	销轴长度 Pin length		内链板高度 Inner plate depth	链板厚度 Plate thickness	抗拉强度 Ultimate tensile strength	平均抗拉强度 Average tensile strength	每米重量 Weight per meter
					L	Lc					
					max	max					
428HSO	12.70	8.51	7.94	4.36	20.50	23.00	12.50	2.00/1.80	18.62	21.00	1.07
520SO	15.875	10.16	6.35	5.08	20.50	21.60	15.09	2.06	22.20	26.50	0.96
530SO	15.875	10.16	9.53	5.08	23.50	24.90	15.09	2.06	22.20	26.46	1.12



GB 链号 GB Chain No.	JCAS 链号 JACS Chain No.	节距 Pitch P	滚子直径 Roller diameter d <sub>1</sub>	内节内宽 Width between inner plates b <sub>1</sub>	销轴直径 Pin diameter d <sub>2</sub>	销轴长度 Pin length L	内链板高度 Inner plate depth h <sub>2</sub>	抗拉强度 Ultimate tensile strength Q	平均抗拉强度 Average tensile strength Q <sub>0</sub>	每米重量 Weight per meter q
								min	min	≈
		mm	mm	mm	mm	mm	mm	kN	kN	kg/m
04MA	25H	6.35	3.30	3.18	2.31	8.90	6.00	4.80	5.20	0.17
04C		6.35	3.30	3.18	2.31	7.90	6.00	3.50	4.40	0.15
04C-2		6.35	3.30	3.18	2.31	14.50	6.00	7.00	8.20	0.28
05MA	219	7.774	4.59	5.00	3.01	12.00	7.60	6.60	7.10	0.27
05MC	270	8.50	5.00	4.75	3.28	13.30	8.45	9.80	11.70	0.33
06B-1		9.525	6.35	5.72	3.28	13.15	8.26	8.90	10.30	0.41
06B-2		9.525	6.35	5.72	3.28	23.40	8.26	16.90	18.10	0.74
06C		9.525	5.08	4.77	3.58	12.40	9.00	7.90	9.80	0.33



链号 Chain No.	节距 Pitch P	链宽 Chain width W	组合形式 Plates lacing	销轴直径 Pin diameter D	销轴长度 Pin length L	链板厚度 Link thickness		链板高度 Link depth		抗拉强度 Ultimate tensile strength Q	疲劳强度 Fatigue strength Q <sub>0</sub>	每米重量 Weight per meter q
						T <sub>1</sub>	T <sub>2</sub>	H <sub>1</sub>	H <sub>2</sub>			
		mm		mm	mm	mm		mm	mm	kN	kN	kg/m
C063-4.8	6.35	4.80	2 × 3	2.70	6.10	1.04	0.72	3.92	6.72	5.46	0.98	0.173
C063-6.5	6.35	6.50	3 × 4	2.70	8.25	1.04	0.72	3.92	6.72	7.23	1.47	0.248
C063-9.5	6.35	9.50	4 × 5	2.70	10.95	1.04	1.04	3.92	6.72	9.52	2.06	0.340