

## Reliability, safety and efficiency

Polyester bobbin wound and fibreglass technology applied to the industrial filters used in large size installations



**FIBERPOOL**

### **Industrial bobbin wound polyester and fibreglass sand filters**

Light structure, but suitable for higher pressures (up to 6 bars operating pressure)

Corrosion-resistant, even with ozone applications (tank with a special PVC internal lining)

Available as both Vertical and horizontal construction

Available diameters: from 1050mm up to 3000mm

Arm collectors or nozzle plate filtration system

Connections in DIN PVC flanges

Filtration bed depth: 1 m, 1,2 m or 1,5 m.

Options: side manholes, sight glasses, manometer panels and air relief valves.

Top manhole with bridge and air bleed valve.

Manual or automatic butterfly valves batteries.

**FIBERPOOL INTERNACIONAL, S. L.**

Ponent, 3-5-7  
P.I. Sant Pere Molanta  
08799 Olérdola  
Barcelona

Tel. 93 818 00 16  
Fax 93 818 07 18  
www.fiberpool.com  
fiberpool@fiberpool.com

warranty  years



**FIBERPOOL**



Industrial bobbin wound polyester and fibreglass sand filters

At **Fiberpool Internacional, S. L.**, we are specialists in the production of bobbin wound polyester sand filters for large size installations, such as commercial and communal swimming-pools, aquatic parks, water treatment plants, aquariums, etc.

You will find our equipment in more than 50 countries of the world in all the five continents.

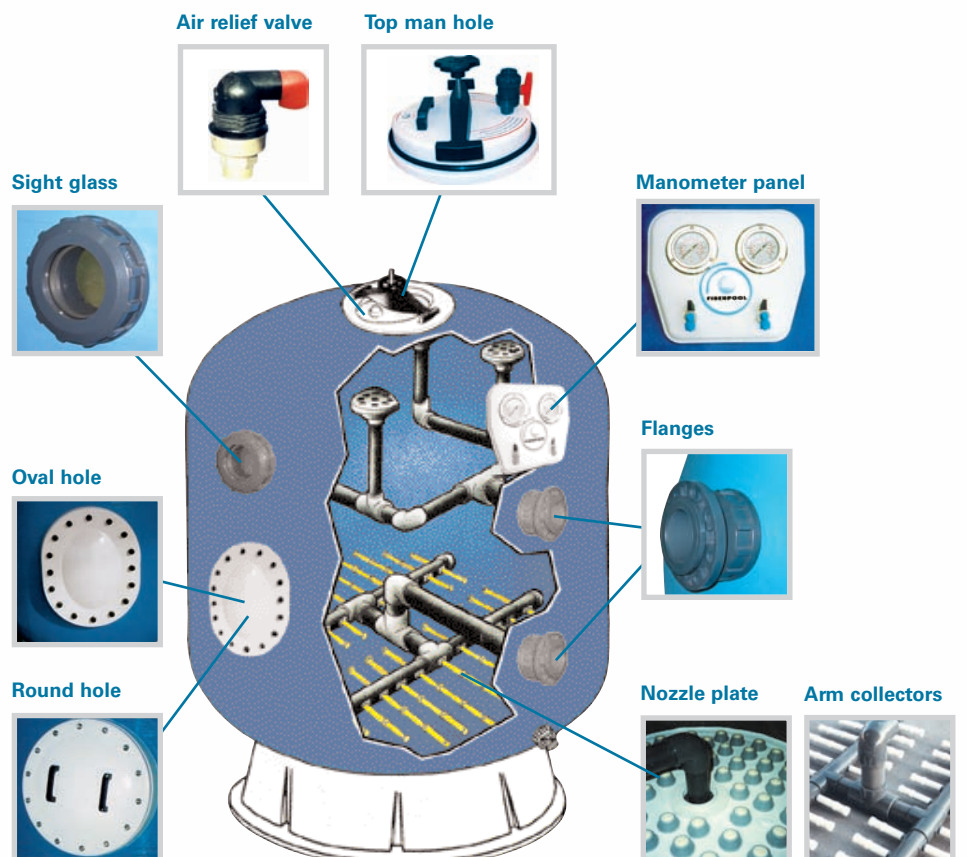
In our factory we use the most appropriate methods to insure an environment friendly production with preventive measures for securing labour safety.

Our industrial filters production plan includes vertical and horizontal filters. The vertical type filters are manufactured as standard filters (FS) with arm collectors or as high performance filters (FA) with arm collectors or nozzle plate. The maximum operating pressures are: 2,5 bar, 4 bar or 6 bar.

The horizontal filters are manufactured with arm collectors and the maximum operating pressures are: 2,5 bar or 4 bar.

Our technical team will be pleased to suggest to you the filters that adapt best to your specific project. It is also possible to offer you special modifications on standard filters.

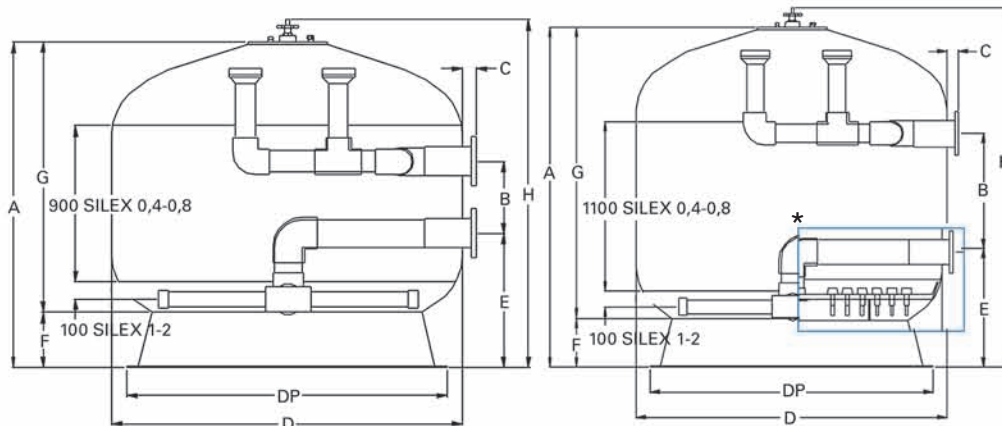
## Construction details and standard options





**FIBERPOOL**

## Standard vertical filters (FS) and high performance filters (FA)



**FS**

**FA**

### Standard vertical filters (FS)

<b>FS</b>	Ø(mm)	1.050	1.200	1.400	1.600	1.800	2.000	2.350	2.500	3.000
<b>FLANGES Ø(mm)</b>		63/75/90	75/90	75/90/110	90/110/125	90/110 125/140	110/125 140/160	125/140 160/200	140/160 200/225	160/200 225/250
<b>Filtration bed depth (m)</b>		1	1	1	1	1	1	1	1	1
<b>H (mm)</b>		1.807	1.807	1.807	1.907	1.947	2.007	2.367	2.772	2.986
<b>E (mm)</b>		675	725	735	780	810	825	1.020	980	1.150
<b>B (mm)</b>		550	440	440	440	440	380	400	600	550
<b>G (mm)</b>		1.442	1.432	1.413	1.469	1.520	1.560	1.860	2.231	2.375
<b>F (mm)</b>		238	248	267	311	300	320	380	380	450
<b>A (mm)</b>		1.680	1.680	1.680	1.780	1.820	1.880	2.240	2.611	2.825
<b>DP (mm)</b>		1.015	1.090	1.300	1.500	1.630	1.850	2.100	2.100	2.600
<b>C (mm)</b>		75	75	75	75	75	75	75	75-80	75-80
<b>Filtr. surface (m²)</b>		0,86	1,13	1,54	2,01	2,54	3,14	4,33	4,90	7,07
<b>Volume (L)</b>		1.145	1.462	1.912	2.609	3.527	4.295	7.006	8.752	13.960
<b>Silex 1-2 (Kg)</b>		165	208	228	476	783	1.185	1.735	1.600	3.282
<b>Silex 0,4-0,8(Kg)</b>		975	1.273	1.711	2.261	2.863	3.525	4.866	5.474	7.913

### High performance vertical filters (FA)

<b>FA</b>	Ø(mm)	1050	1200	1400	1600	1800	2000	2350	2500	3000
<b>FLANGES Ø(mm)</b>		75/90	75/110	90/125	110/125	125/160	125/160	140/200	160/225	200/250
<b>Filtration bed depth (m)</b>		1,2	1,2	1,2	1,2	1,2	1,2	1,2	1,2	1,2
<b>H (mm)</b>		2.259	2.282	2.304	2.399	2.327	2.476	2.676	2.772	2.986
<b>E (mm)</b>		675	725	735	780	810	810	1.020	980	1.150
<b>B (mm)</b>		820	810	815	850	820	800	560	600	550
<b>G (mm)</b>		1.894	1.907	1.910	1.961	1.900	2.030	2.170	2.231	2.375
<b>F (mm)</b>		238	248	267	311	300	320	380	380	450
<b>A (mm)</b>		2.132	2.155	2.177	2.272	2.200	2.350	2.550	2.611	2.825
<b>DP (mm)</b>		1.015	1.090	1.300	1.500	1.630	1.850	2.100	2.100	2.600
<b>C (mm)</b>		75	75	75	75	75	75	75	75-80	75-80
<b>Filtr. surface (m²)</b>		0,86	1,13	1,54	2,01	2,54	3,14	4,33	4,90	7,07
<b>Volume (L)</b>		1.536	1.999	2.677	3.500	4.494	5.611	7.693	8.752	13.960
<b>Silex 1-2 (Kg)</b>		184	234	256	535	880	1.333	1.951	1.800	3.482
<b>Silex 0,4-0,8(Kg)</b>		779,2	1.017,9	1.385,4	1.809,6	2.290	2.827,5	3.903,6	4.417,8	6.361,8
<b>Anthracite (L)</b>		346,4	453,2	615,8	804,2	1.017	1.256,6	1.734,9	1.963,5	2.827,4

\* Optionally: same sizes for filters with nozzle plate.



**The vertical FS standard filters** are supplied with arm collectors, 1 m filtration bed depth, central top manhole with bridge and air-bleed valve, separate sand and water drains, filter pressure gauge installed in the same filter tank and inlet and outlet connections with PVC lose flanges. Maximum operating pressures: 2,5 bar, 4 bar or 6 bar. Available diameters: from 1050 mm up to 3000mm.

**The vertical FA high performance filters are supplied in two different types:** with arm collectors or with nozzle plate. The bed depth can be 1,2m or 1,5 m high. The rest of characteristics are the same to the FS standard filters. Maximum operating pressures: 2,5 bar or 4 bar.

Special sizes are also available under request



**FIBERPOOL**

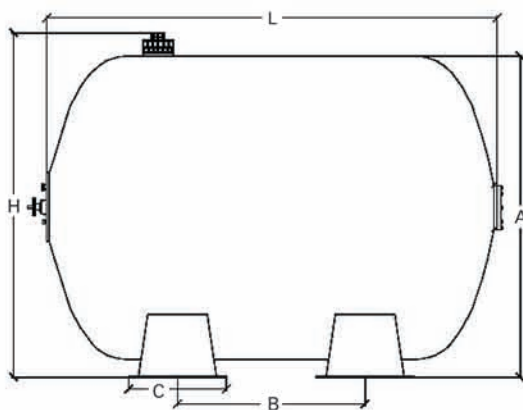


**The FH horizontal filters** are supplied with arm collectors. Available diameters are: Ø 1050 mm (0,6 m bed depth) Ø 2.000 mm (1m bed depth) Ø 2.350 and 2.500 mm (1,2 m bed depth). Maximum operating pressures: 2,5 or 4 bar.

Standard lengths: 1.500 mm or 2.000 mm (in filters Ø 1050 mm) 2.500 mm, 3.000 mm or 3.500 mm (in filters Ø 2.000 mm) 3.000 mm or 3.500 mm (in filters Ø 2.350) 4.000 mm or 5000 mm (in filters Ø 2.500 mm).

Each filter incorporates a manhole in one tank-end, an air-bleed valve and inlet and outlet connections with PVC lose flanges.

## Horizontal filters (FH)



Ø(mm)	1.050	1.050	2.000	2.000	2.000	2.350	2.350	2.500	2.500
L	1.500	2.000	2.500	3.000	3.500	3.000	3.500	4.000	5.000
FLANGES Ø (mm)	75/90/110	75/110	110/125/160	125/140/160	140/160	140/160	140/160	140/200	160/225
		125	200	200/225	200/225	200/225	200/225	225/250	250
Filtration bed depth (m)	0,6	0,6	1	1	1	1,2	1,2	1,2	1,2
H	1.413	1.413	2.433	2.433	2.433	2.753	2.753	2.765	2.765
A	1.120	1.120	2.140	2.140	2.140	2.460	2.460	2.610	2.610
B	500	500	850	1.250	1.500	1.100	800	1.000	1.000
C	450	450	650	650	650	650	650	650	650
Nº peanas	2	2	2	2	2	2	3	3	4
Filtr. surface (m <sup>2</sup> )	1,318	1,798	4,2	5,14	6,08	5,89	7,04	8,77	11,04
Volume (L)	1.144	1.573	6.633	8.132	9.802	11.040	13.222	17.183	22.096
Silex 1-2 (Kg)	275	416	1.495	1.785	2.365	2.023	2.383	3.133	4.096
Silex 0,4-0,8(kg)	851	1.185	4.665	5.720	8.765	4.170	4.977	6.026	8.020



Industrial bobbin wound polyester and fibreglass sand filters



**FIBERPOOL**

## Valves batteries for bobbin wound sand filters

FIBERPOOL supplies the valves batteries **completely assembled in our factory**, using pipes, fittings and butterfly valves in PVC of the best quality. The supports are always supplied except for diameter Ø75mm. A manometer panel with test valves is also included. The batteries can be supplied for single filters or as a duplex system (one battery for two filters). The 5 valves can be manual or automatic with either electric or pneumatic actuator.



Bobbin wound  
poliester sand  
filters



### Manual valves battery

The battery with manual operated valves is composed of 5 butterfly valves in PVC, driven by a control lever with positioning, and assembled with flange adaptors and backing rings that allow an easy dismantling in case of failure or for maintenance reasons.

### Automatic valves battery with electric actuators

The PVC butterfly valves in this assembly incorporate electric actuator connected to an electronic control panel allowing the automatic control of all filter operations to secure a correct functioning of the filtration plant. The electricity supply can be 220V or 24V. Safety blocks can be included on the electric actuators to prevent a loss of power.

### Automatic valves battery with pneumatic actuators

This is a solidly made system and it is much cheaper than the one with electric actuators. We use simple effect pneumatic actuators. Its polyamide construction severest makes them very resistant to the strongest environmental conditions.

Optionally, we can supply these valves batteries completely assembled, with all the necessary connections, including an electronic control panel and a compressor.





**FIBERPOOL**

## **And also...**

**Domestic bobbin wound laminated & blow sand filters & underground technical filtration housings**

**Centrifugal pumps, prefilters and blowers**

**Electronic control panels**

**Wall fittings:**

**Skimmers  
Main drains  
Cross-current equipment ECC  
Underwater lights  
Gratings, etc...**

**PVC Fittings**

**Valves,  
Accessories,  
PVC hoses**

**Cleaning accessories:**

**Manual and automatic vacuum cleaners  
Brushes  
Vacuum hoses  
Telescopic handles  
Leaf skimmers, etc...**

**External material**

**Ladders  
Showers, etc...**

**Salt water chlorinators**

**Automatic covers**

Revised: November 06

